

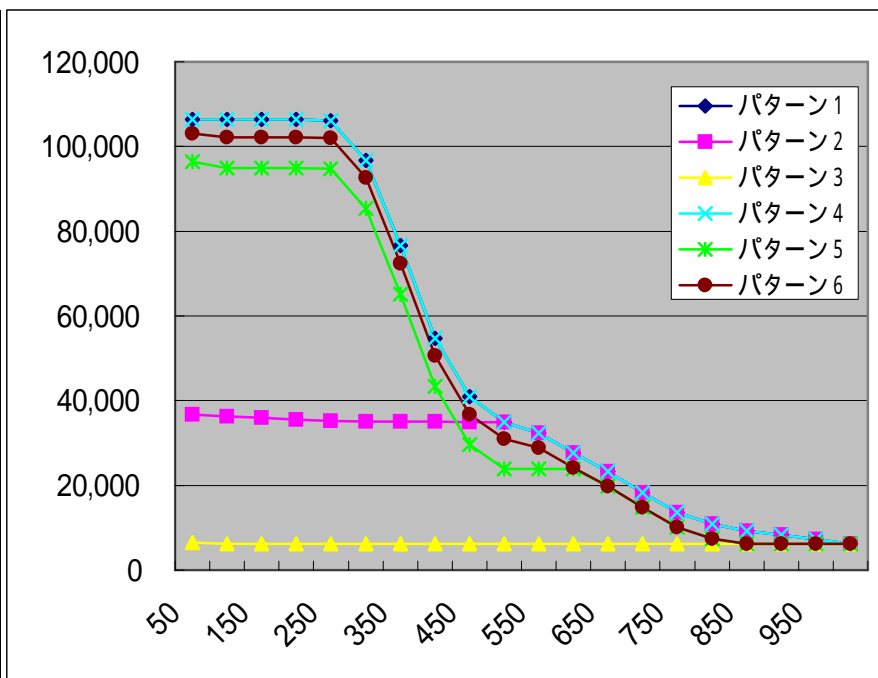
SMS-32-SBB-02-Bessi UPBO干渉計算結果

lef 値

	パターン1	パターン2	パターン3	パターン4	パターン5	パターン6
lef0	0	500	1000	0	0	0
lef1	0	500	1000	375	1000	1000
lef2	0	500	1000	225	605	512
lef3	0	500	1000	0	189	111

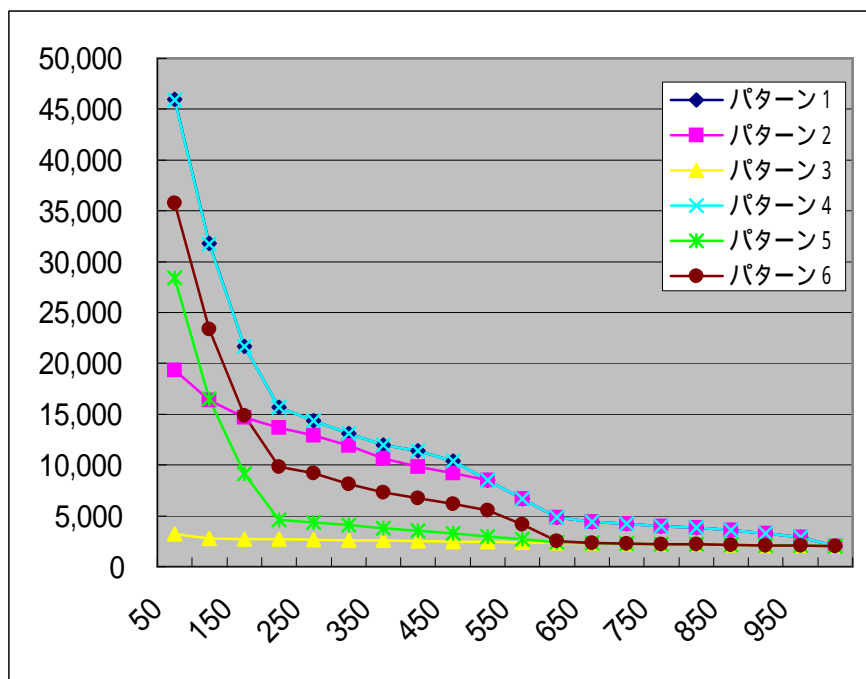
AWGN

	パターン1	パターン2	パターン3	パターン4	パターン5	パターン6
50	106,336	36,800	6,496	106,336	96,416	103,040
100	106,336	36,288	6,240	106,336	94,880	102,208
150	106,336	35,904	6,240	106,336	94,880	102,176
200	106,336	35,552	6,240	106,336	94,880	102,176
250	106,112	35,232	6,240	106,112	94,688	101,952
300	96,800	35,040	6,240	96,800	85,344	92,608
350	76,576	35,040	6,240	76,576	65,120	72,384
400	54,784	35,008	6,240	54,784	43,328	50,592
450	41,024	34,976	6,240	41,024	29,568	36,800
500	34,976	34,976	6,240	34,976	23,808	31,040
550	32,416	32,416	6,240	32,416	23,808	28,928
600	27,712	27,712	6,240	27,712	23,808	24,224
650	23,232	23,232	6,240	23,232	19,744	19,744
700	18,272	18,272	6,240	18,272	14,784	14,784
750	13,600	13,600	6,240	13,600	10,112	10,112
800	10,912	10,912	6,240	10,912	7,424	7,424
850	9,248	9,248	6,240	9,248	6,240	6,240
900	8,352	8,352	6,208	8,352	6,208	6,208
950	7,296	7,296	6,240	7,296	6,240	6,240
1,000	6,240	6,240	6,240	6,240	6,240	6,240



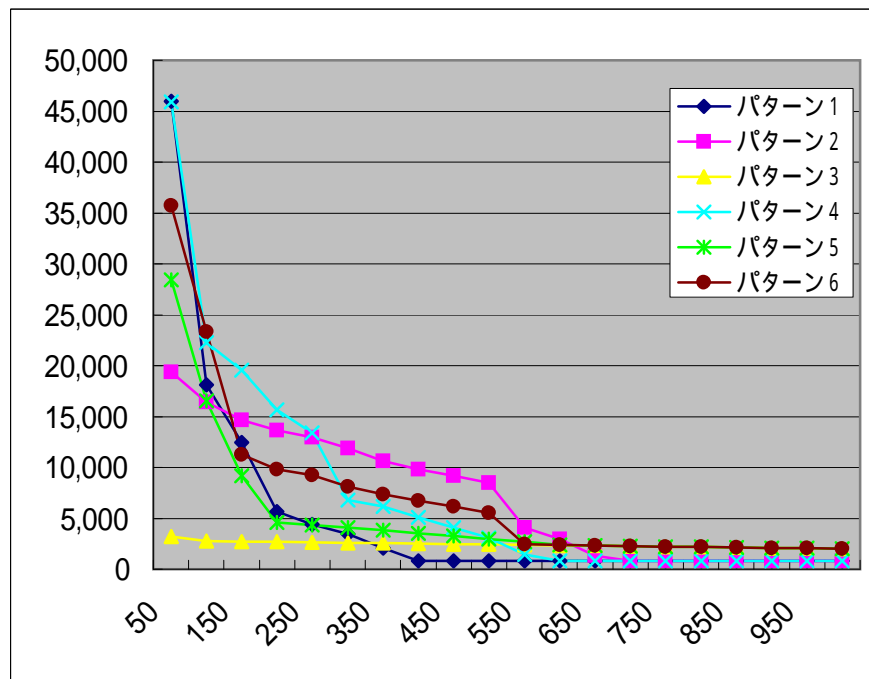
Self

	パターン1	パターン2	パターン3	パターン4	パターン5	パターン6
50	45,984	19,360	3,232	45,920	28,416	35,744
100	31,776	16,384	2,784	31,744	16,512	23,360
150	21,664	14,656	2,720	21,632	9,152	14,848
200	15,680	13,664	2,688	15,680	4,576	9,824
250	14,336	12,928	2,656	14,336	4,320	9,216
300	13,120	11,904	2,592	13,120	4,064	8,128
350	11,968	10,656	2,560	11,968	3,808	7,328
400	11,424	9,824	2,528	11,424	3,520	6,720
450	10,368	9,184	2,464	10,368	3,264	6,144
500	8,512	8,512	2,432	8,512	2,976	5,536
550	6,688	6,688	2,400	6,688	2,688	4,160
600	4,832	4,832	2,336	4,832	2,400	2,528
650	4,416	4,416	2,304	4,416	2,304	2,304
700	4,192	4,192	2,240	4,192	2,240	2,240
750	3,936	3,936	2,208	3,936	2,208	2,208
800	3,840	3,840	2,176	3,840	2,176	2,176
850	3,584	3,584	2,112	3,584	2,112	2,112
900	3,264	3,264	2,080	3,264	2,080	2,080
950	2,880	2,880	2,048	2,880	2,048	2,048
1,000	2,016	2,016	2,016	2,016	2,016	2,016



Worst

	パターン1	パターン2	パターン3	パターン4	パターン5	パターン6
50	45,984	19,360	3,232	45,920	28,416	35,744
100	18,144	16,384	2,784	22,240	16,512	23,360
150	12,480	14,656	2,720	19,552	9,152	11,232
200	5,664	13,664	2,688	15,680	4,576	9,824
250	4,416	12,928	2,656	13,376	4,320	9,216
300	3,456	11,904	2,592	6,784	4,064	8,128
350	2,048	10,656	2,560	6,144	3,808	7,328
400	832	9,824	2,528	5,120	3,520	6,720
450	832	9,184	2,464	4,096	3,264	6,144
500	832	8,512	2,432	3,072	2,976	5,536
550	832	4,064	2,400	1,440	2,688	2,432
600	832	2,944	2,336	832	2,400	2,400
650	832	1,344	2,304	832	2,304	2,304
700	832	832	2,240	832	2,240	2,240
750	832	832	2,208	832	2,208	2,208
800	832	832	2,176	832	2,176	2,176
850	832	832	2,112	832	2,112	2,112
900	832	832	2,080	832	2,080	2,080
950	832	832	2,048	832	2,048	2,048
1,000	832	832	2,016	832	2,016	2,016



Worst/Self

	パターン1	パターン2	パターン3	パターン4	パターン5	パターン6
50	100.0%	100.0%	100.0%	100.0%	100.0%	100.0%
100	57.1%	100.0%	100.0%	70.1%	100.0%	100.0%
150	57.6%	100.0%	100.0%	90.4%	100.0%	75.6%
200	36.1%	100.0%	100.0%	100.0%	100.0%	100.0%
250	30.8%	100.0%	100.0%	93.3%	100.0%	100.0%
300	26.3%	100.0%	100.0%	51.7%	100.0%	100.0%
350	17.1%	100.0%	100.0%	51.3%	100.0%	100.0%
400	7.3%	100.0%	100.0%	44.8%	100.0%	100.0%
450	8.0%	100.0%	100.0%	39.5%	100.0%	100.0%
500	9.8%	100.0%	100.0%	36.1%	100.0%	100.0%
550	12.4%	60.8%	100.0%	21.5%	100.0%	58.5%
600	17.2%	60.9%	100.0%	17.2%	100.0%	94.9%
650	18.8%	30.4%	100.0%	18.8%	100.0%	100.0%
700	19.8%	19.8%	100.0%	19.8%	100.0%	100.0%
750	21.1%	21.1%	100.0%	21.1%	100.0%	100.0%
800	21.7%	21.7%	100.0%	21.7%	100.0%	100.0%
850	23.2%	23.2%	100.0%	23.2%	100.0%	100.0%
900	25.5%	25.5%	100.0%	25.5%	100.0%	100.0%
950	28.9%	28.9%	100.0%	28.9%	100.0%	100.0%
1,000	41.3%	41.3%	100.0%	41.3%	100.0%	100.0%

