

**ZTE中兴**

**International Network**

**Solution Provider**

**Building Service-driven NGN**

# Agenda

- **NGN Overview**
- Commercial Cases
- Total Solution
- Product Family

# Current Communication Networks:

*network-based & device-oriented*



Subscriber



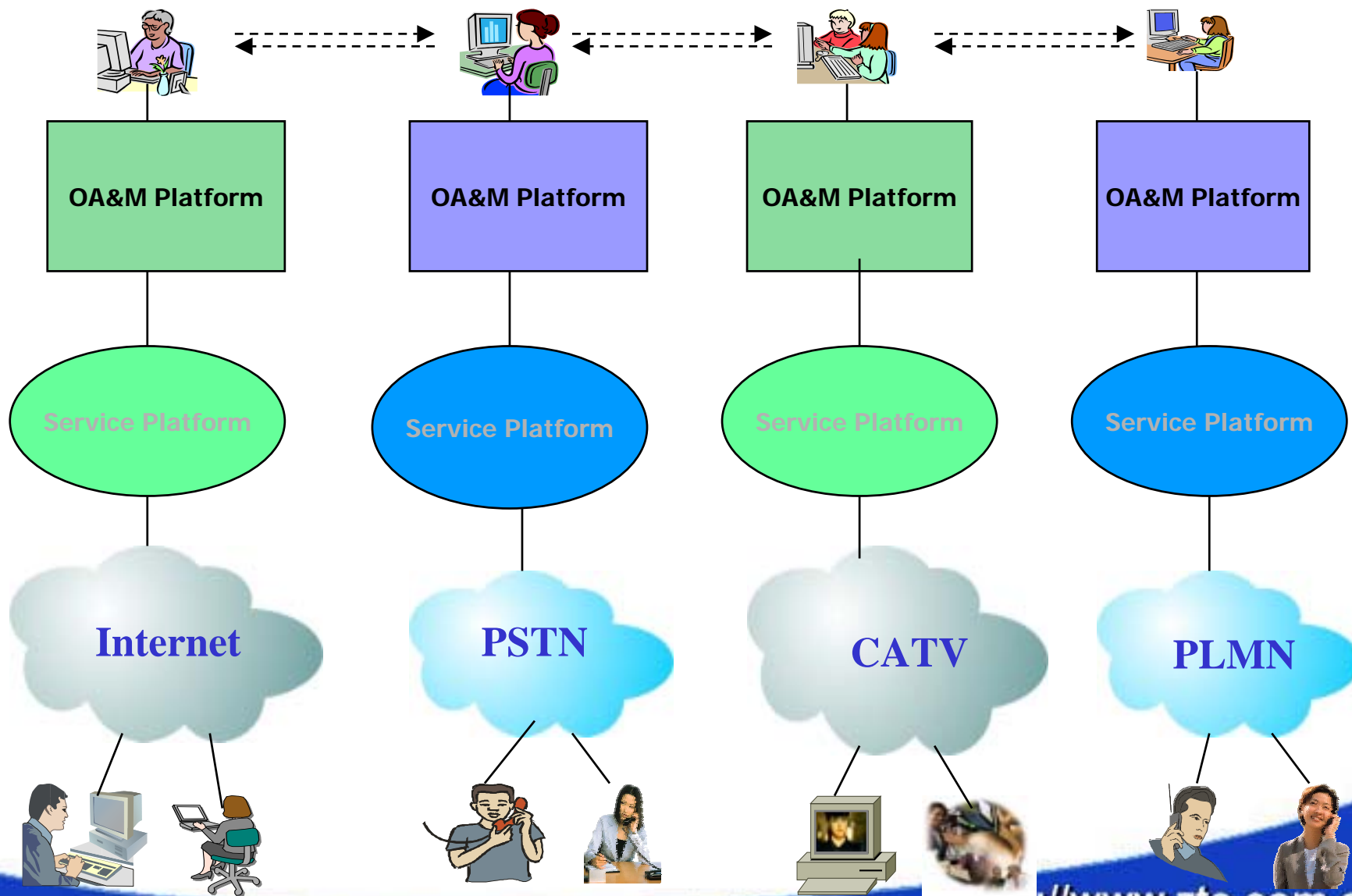
Carriers

Network/service provider

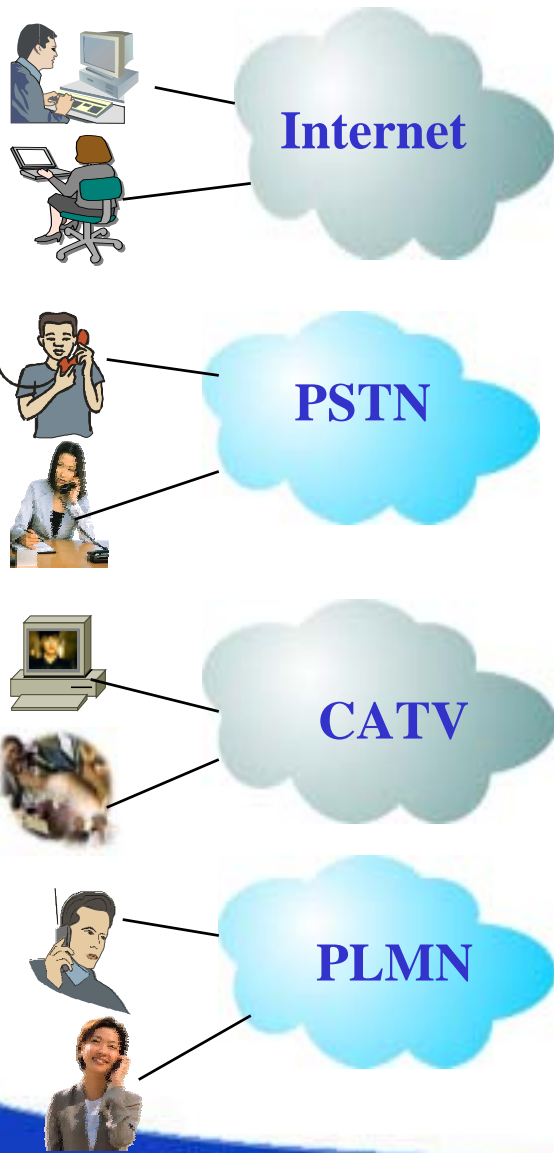


Equipment supplier

## Separate Service and OA&M Platform

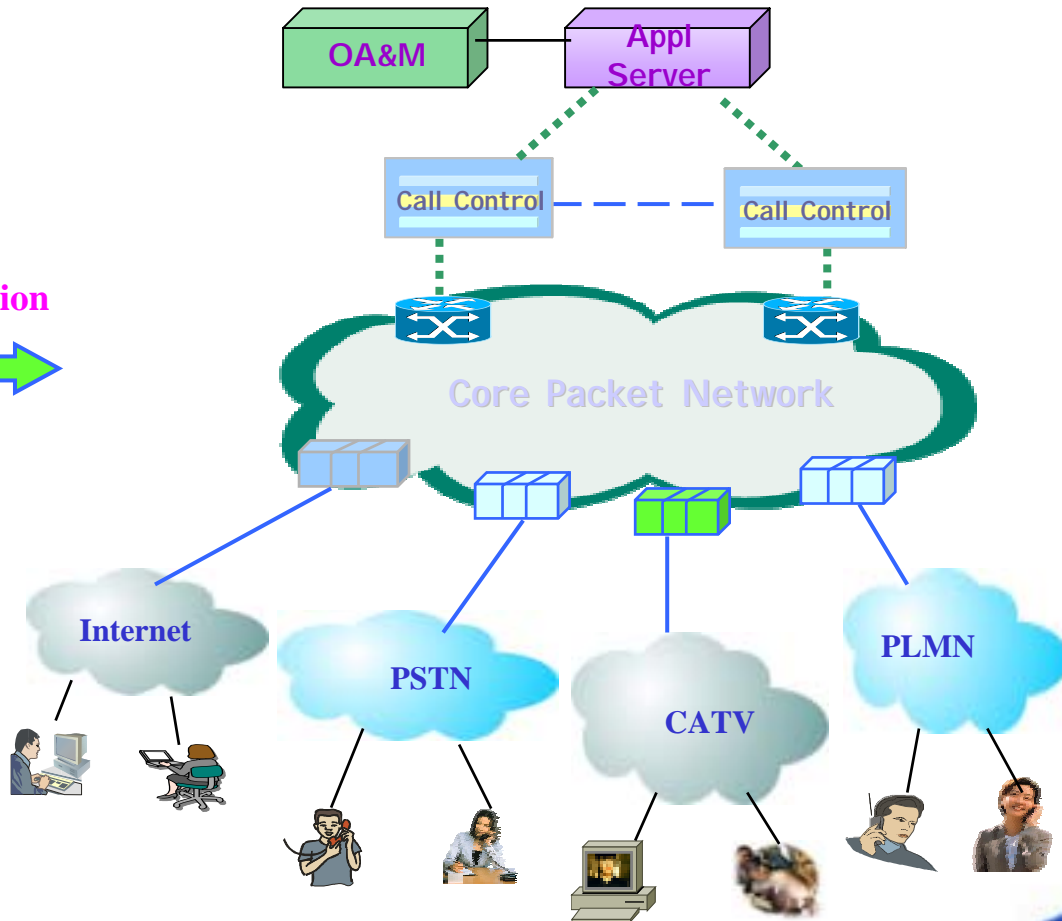


**Today:** Several separate networks

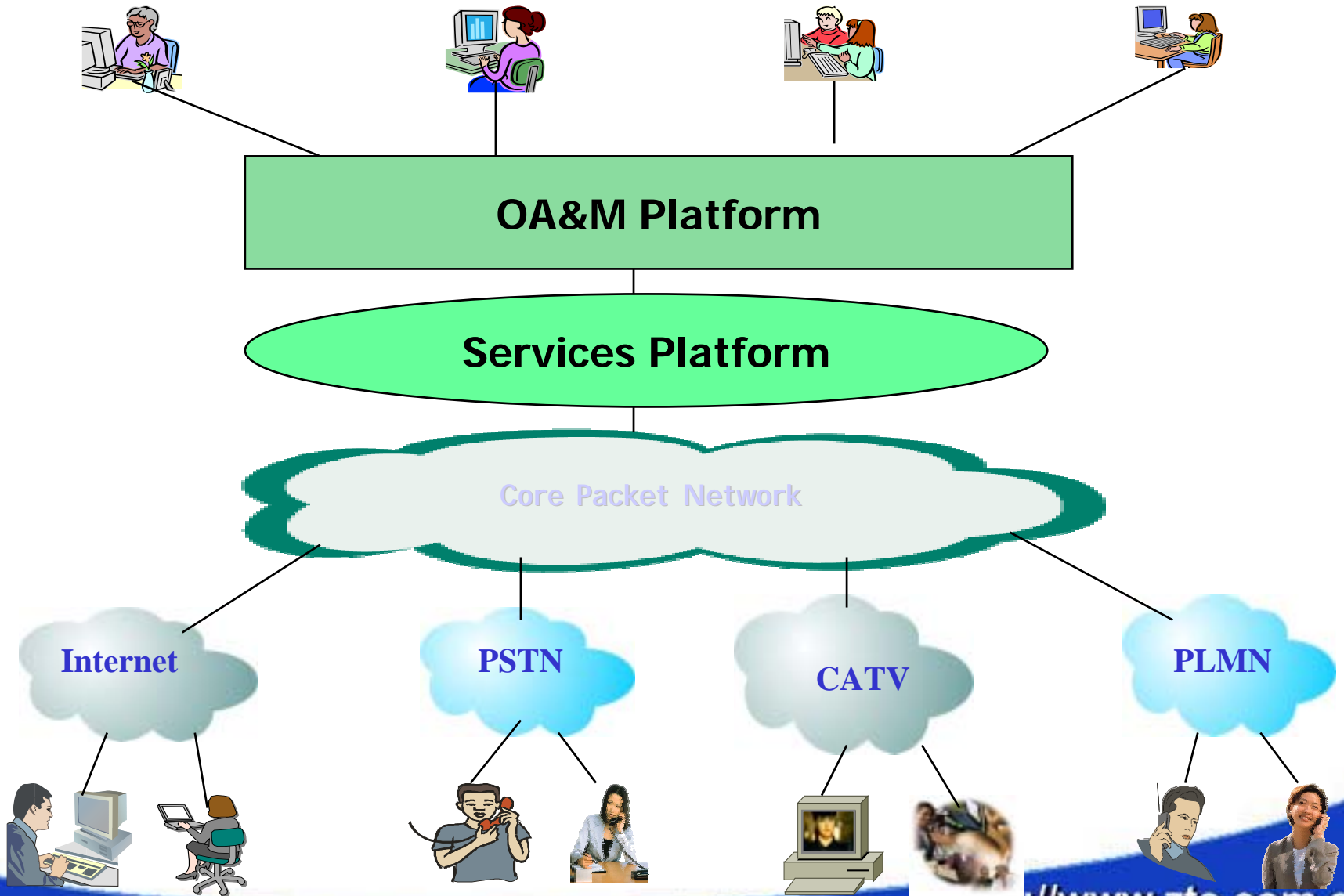


**Tomorrow:** One unified network (NGN)

evolution  
➔



Converged Voice , Data and Video Service



1. NGN is **Voice Over IP**, bypassing the regular switches to save the investment on Switches and Trunks.
2. NGN is **network convergent technology**, combining wireline (PSTN), wireless (GSM, CDMA and 3G) and packet data network together, for integrated voice, data and multimedia services.
3. NGN is a **flat telephone network over Packet Data Network**, instead of traditional Hierarchy structured telephone network with reduced investment.

## **What can ZTE Softswitch and NGN do for Carriers?**

- 1. VoIP (low cost)
- 2. Convergent Networks(low invest)
- 3. Various Services
- 4. Easier NMS



# Agenda

- NGN Overview
- **Commercial Cases**
- Total Solution
- Product Family

# ZTE NGN Deployments in China



**We Are the NGN Market Leader**



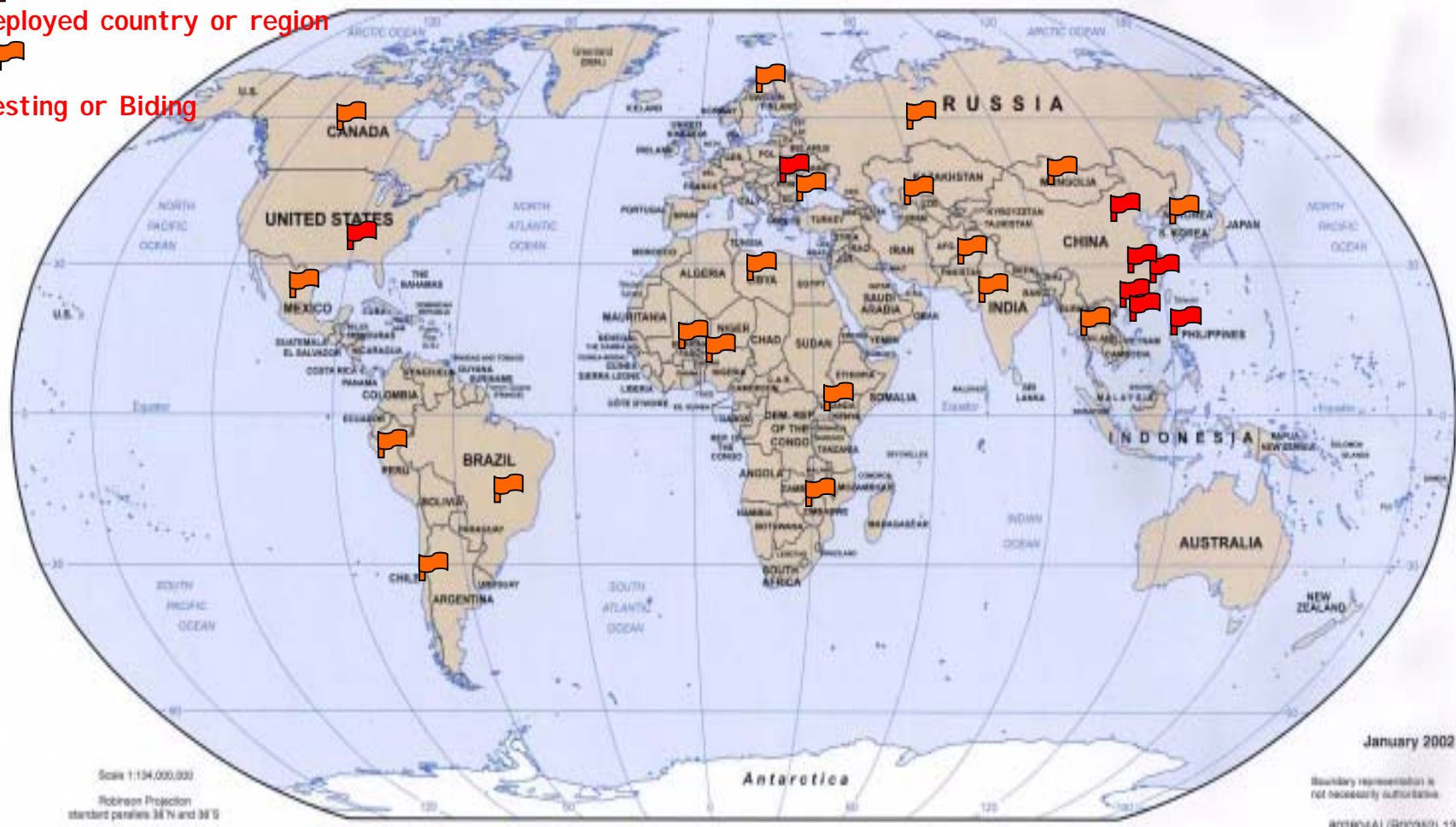
E Softswitch  
Deployed node

© 2001 Microsoft Corp and/or its suppliers.

## ZTE NGN in the World

Employed country or region

Investing or Bidding



January 2002

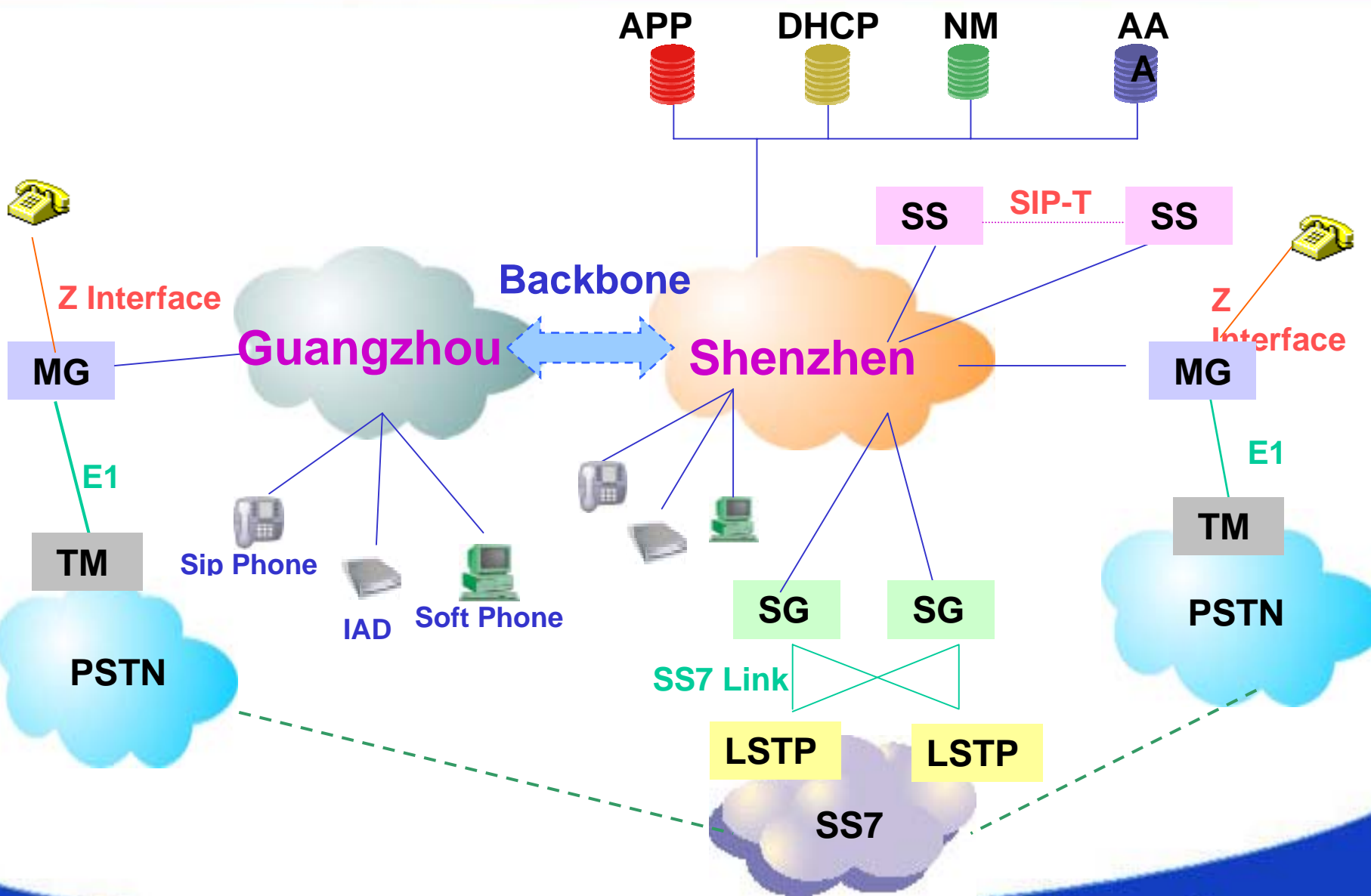
Scale 1:134,000,000  
Robinson Projection  
standard parallels 34°N and 34°S

Boundary representation is not necessarily authoritative

ROTHSCHILD/ROTHSCHILD 12-01

**We are determined to be the worldwide NGN market leader**

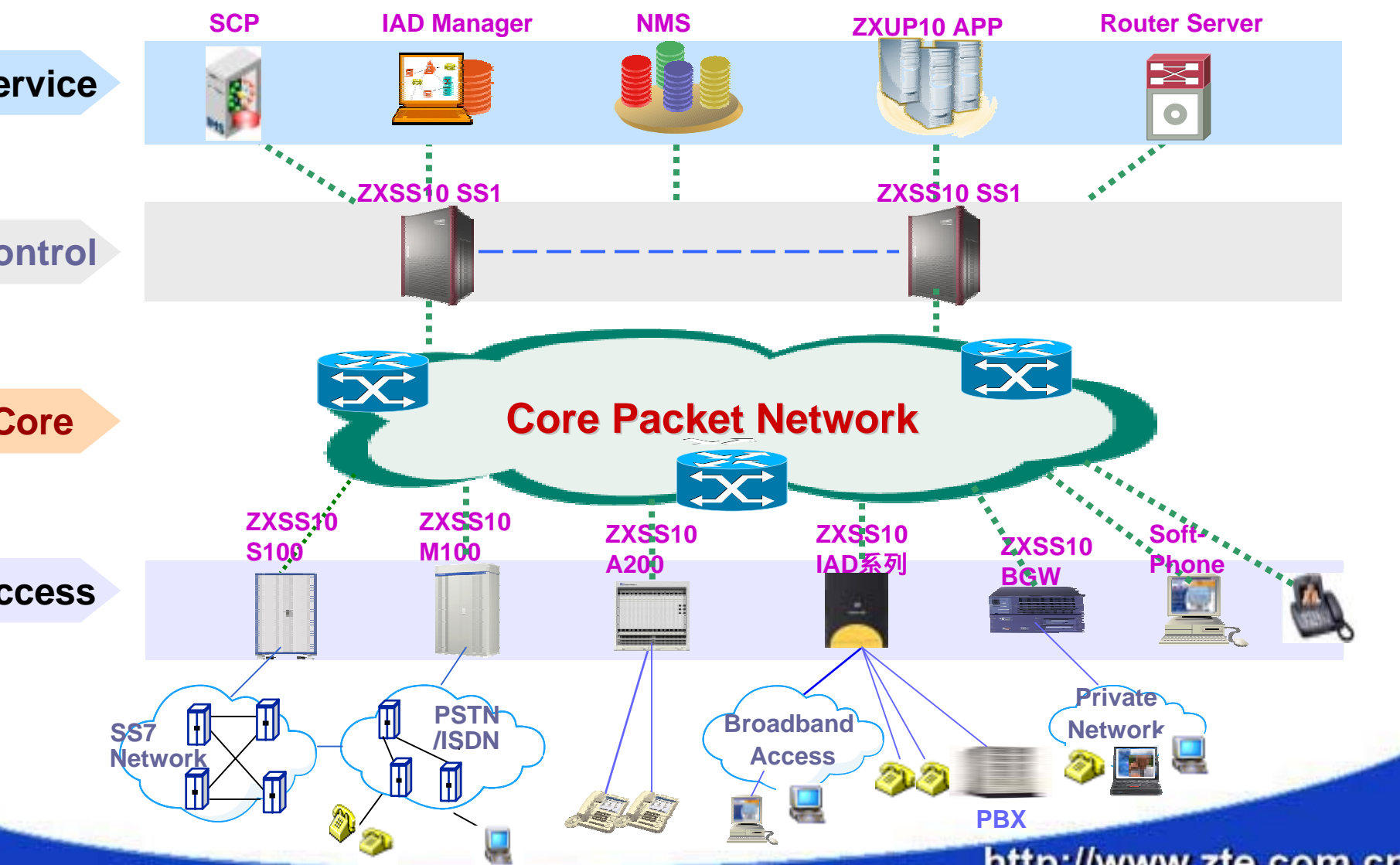
# China Telecom NGN Trial



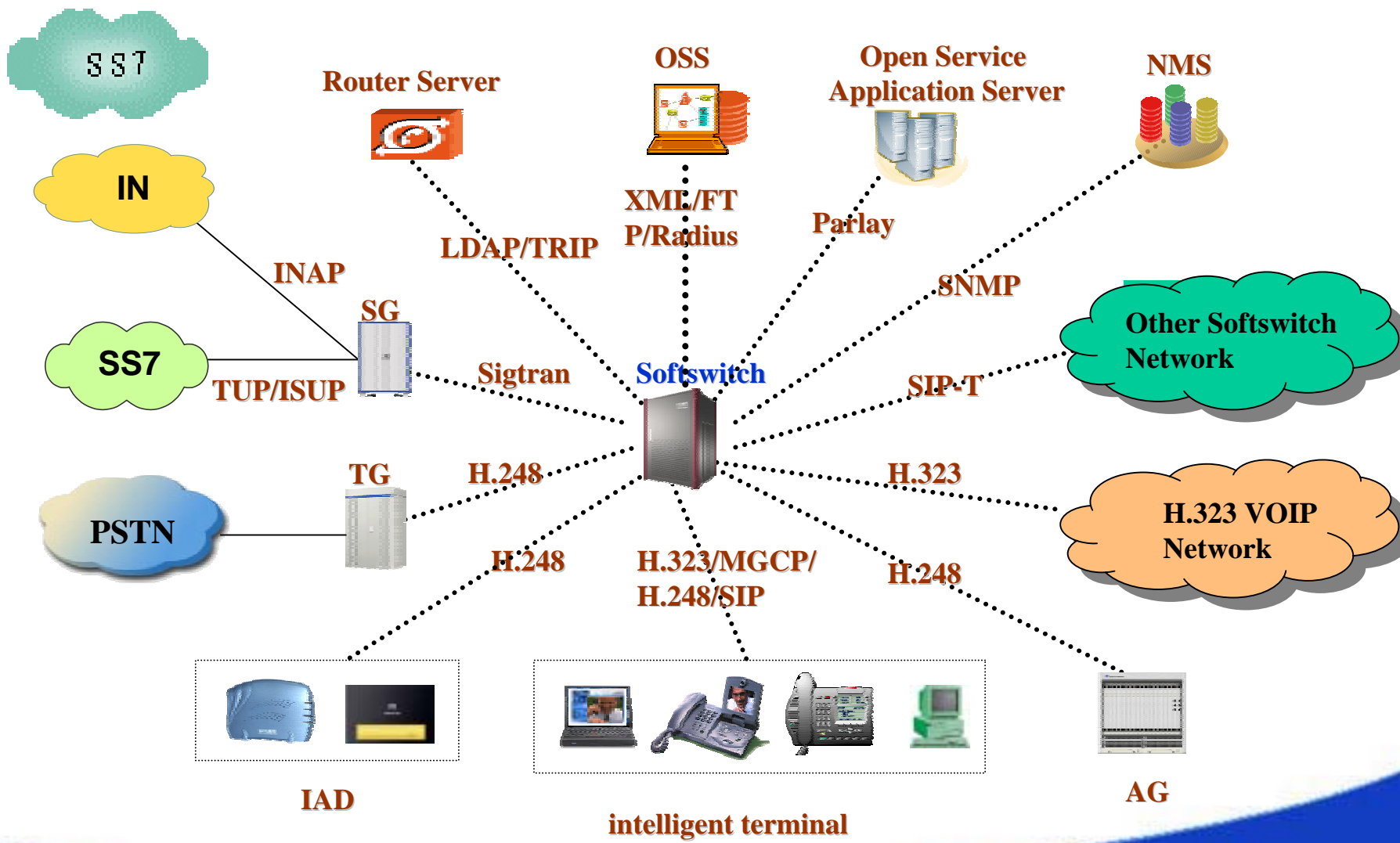
# Agenda

- NGN Overview
- Commercial Cases
- **Total Solution**
- Achievements
- Product Family

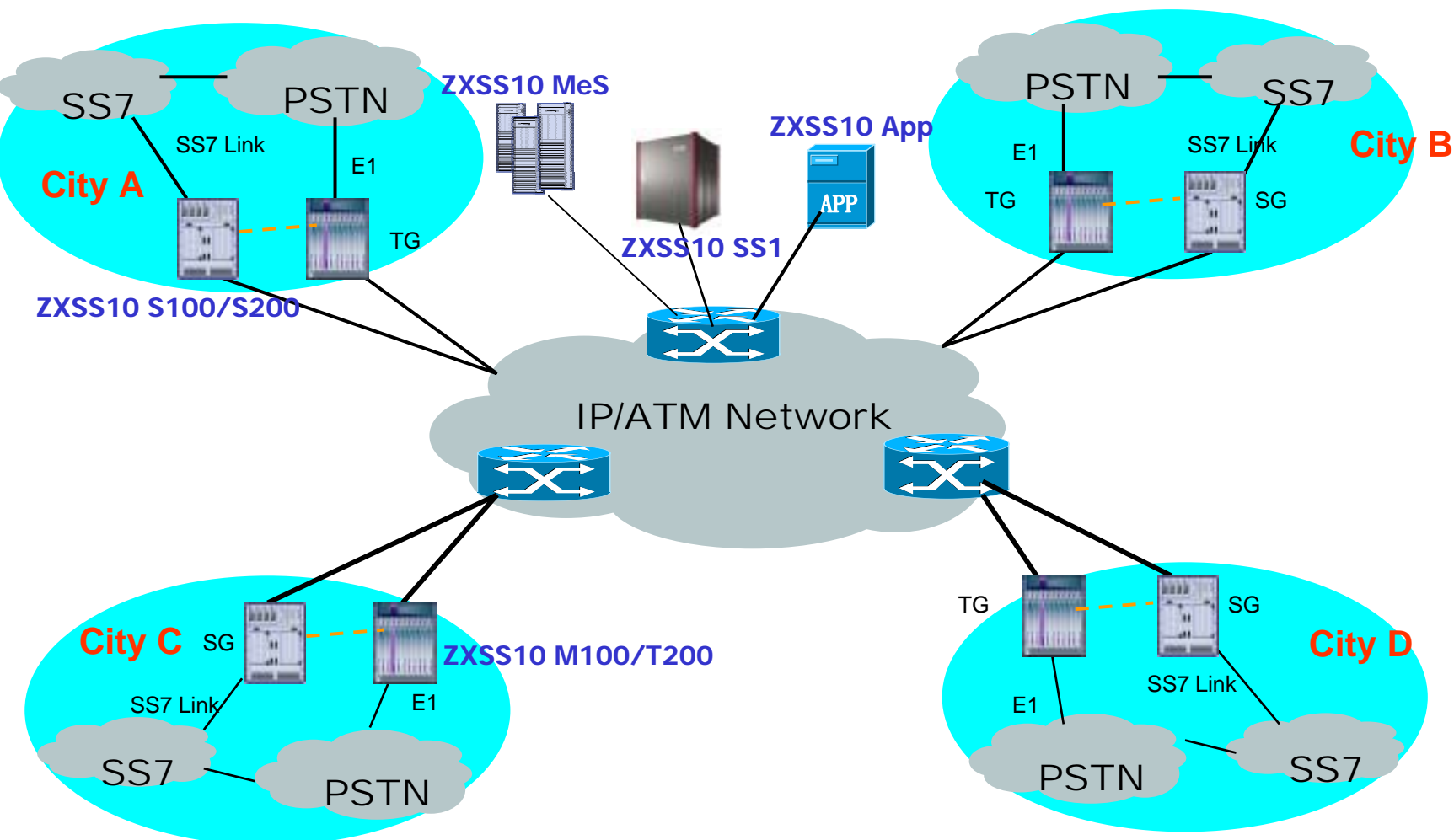
# System Architecture



# Multi-Protocol Support



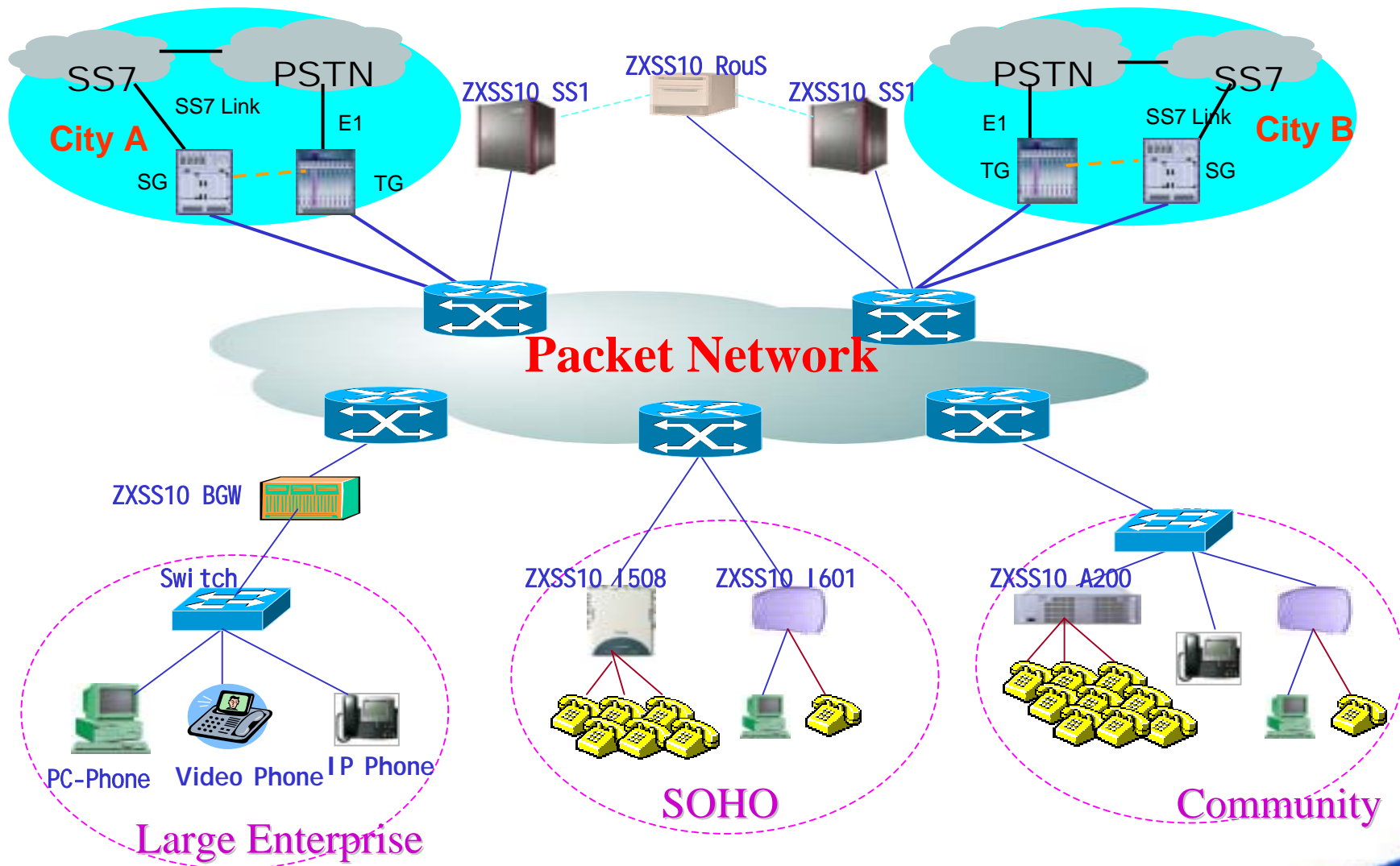
# CLASS 4 Line Displacement



Protect existing investments while migrating to NGN

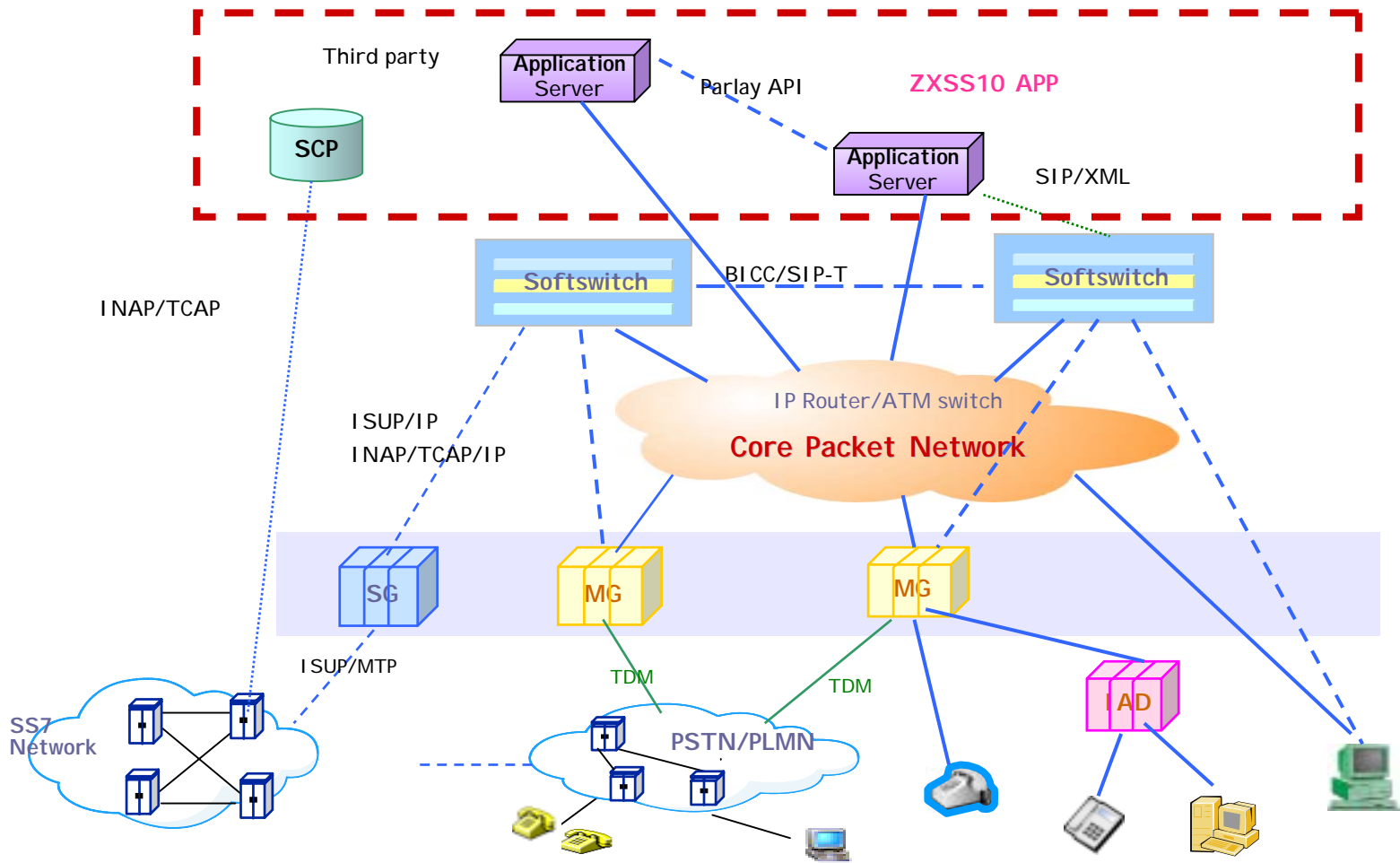


# CLASS 5 Line Displacement

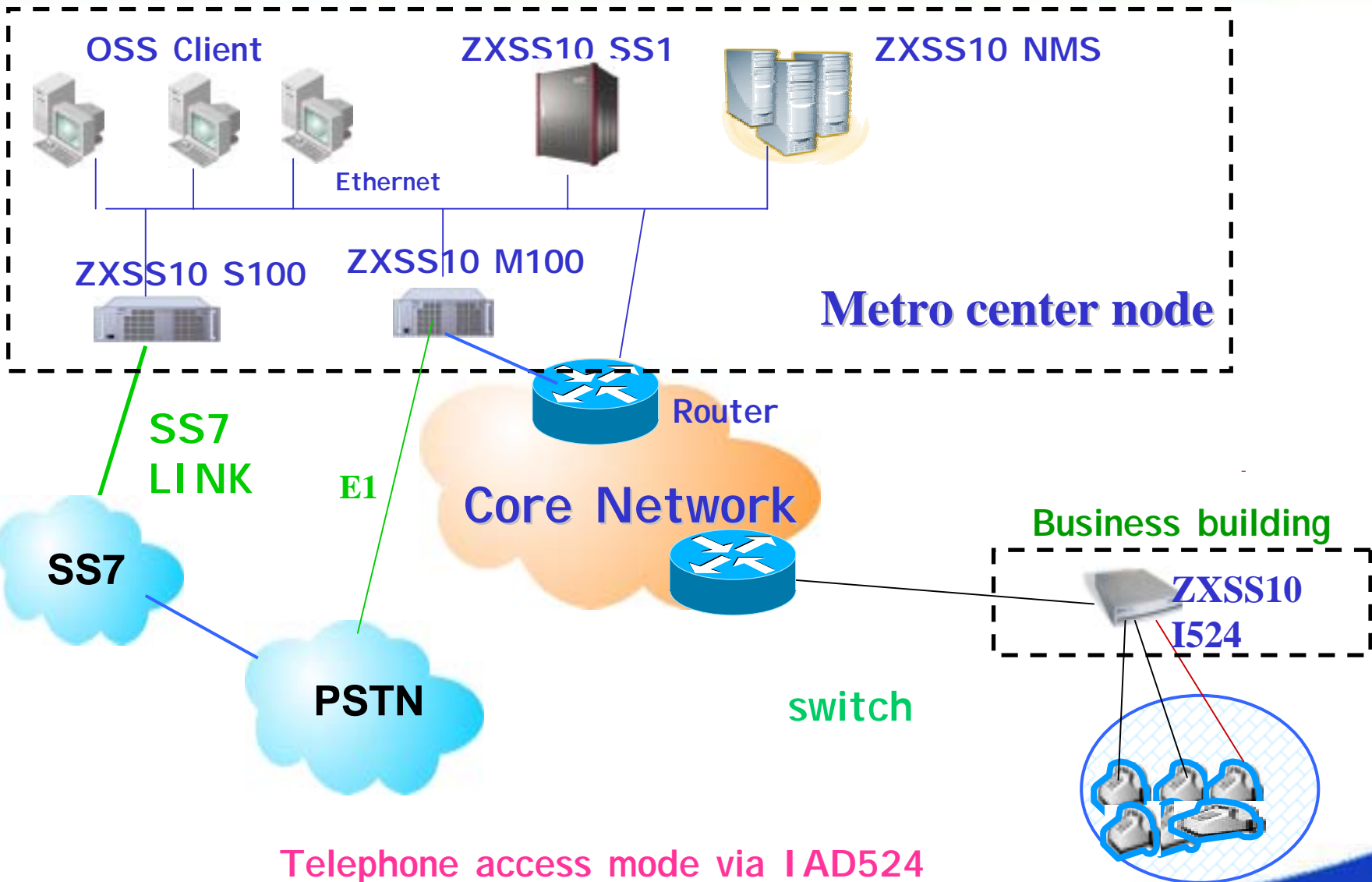


# ZTE Application Server ZXSS10 APP

Allows the creation and delivery of converged services easily and economically

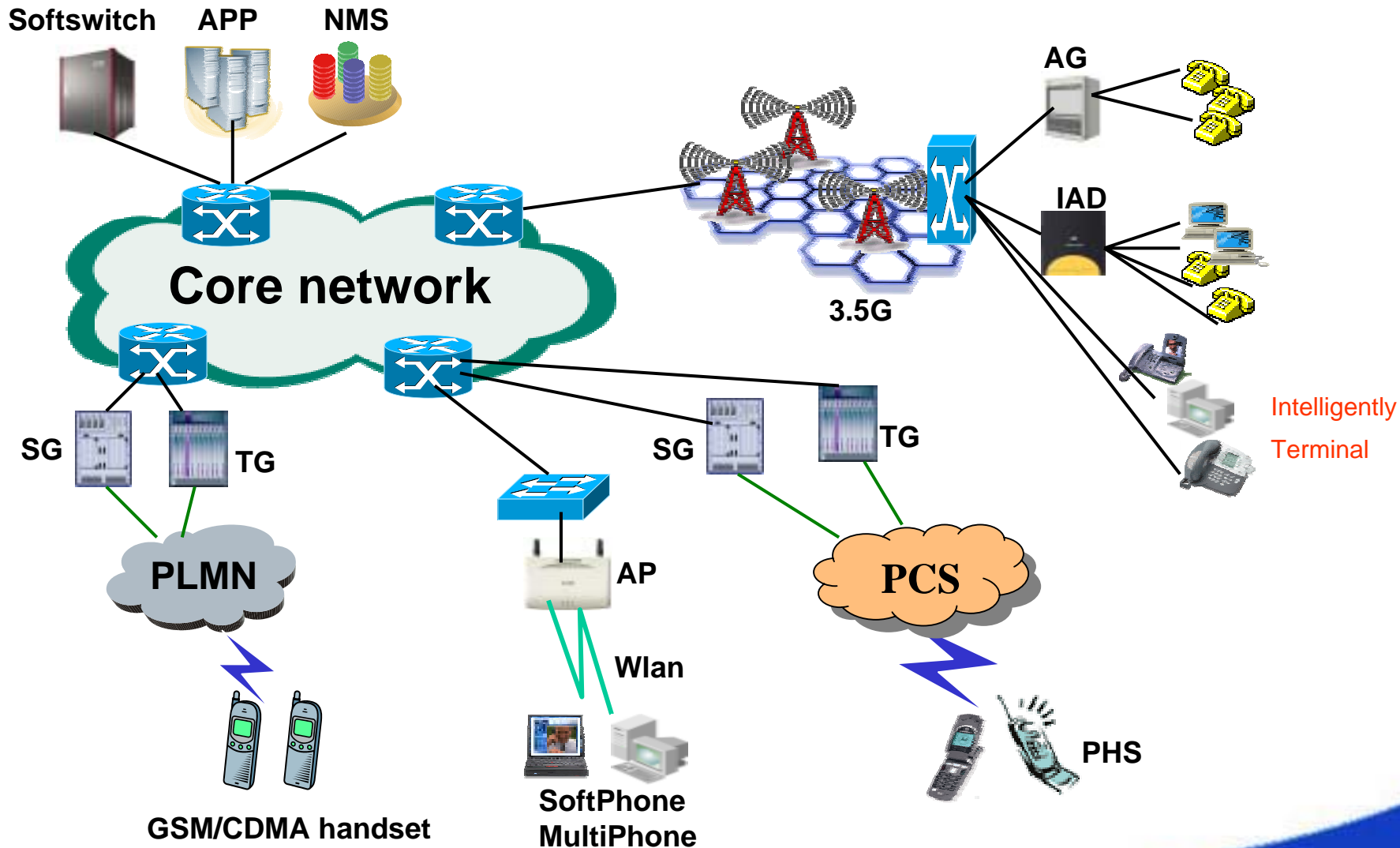


# Access Solution

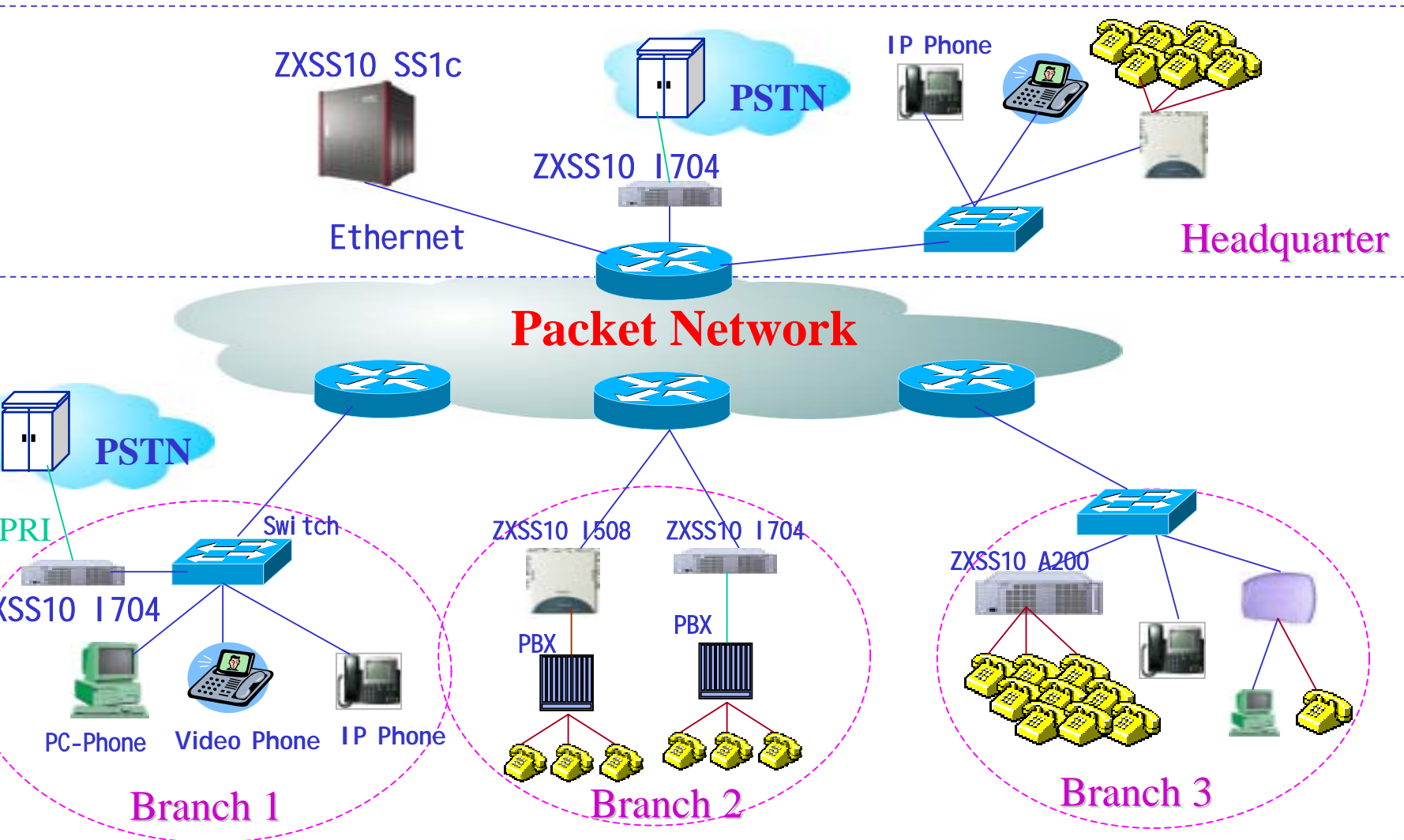


Telephone access mode via IAD524

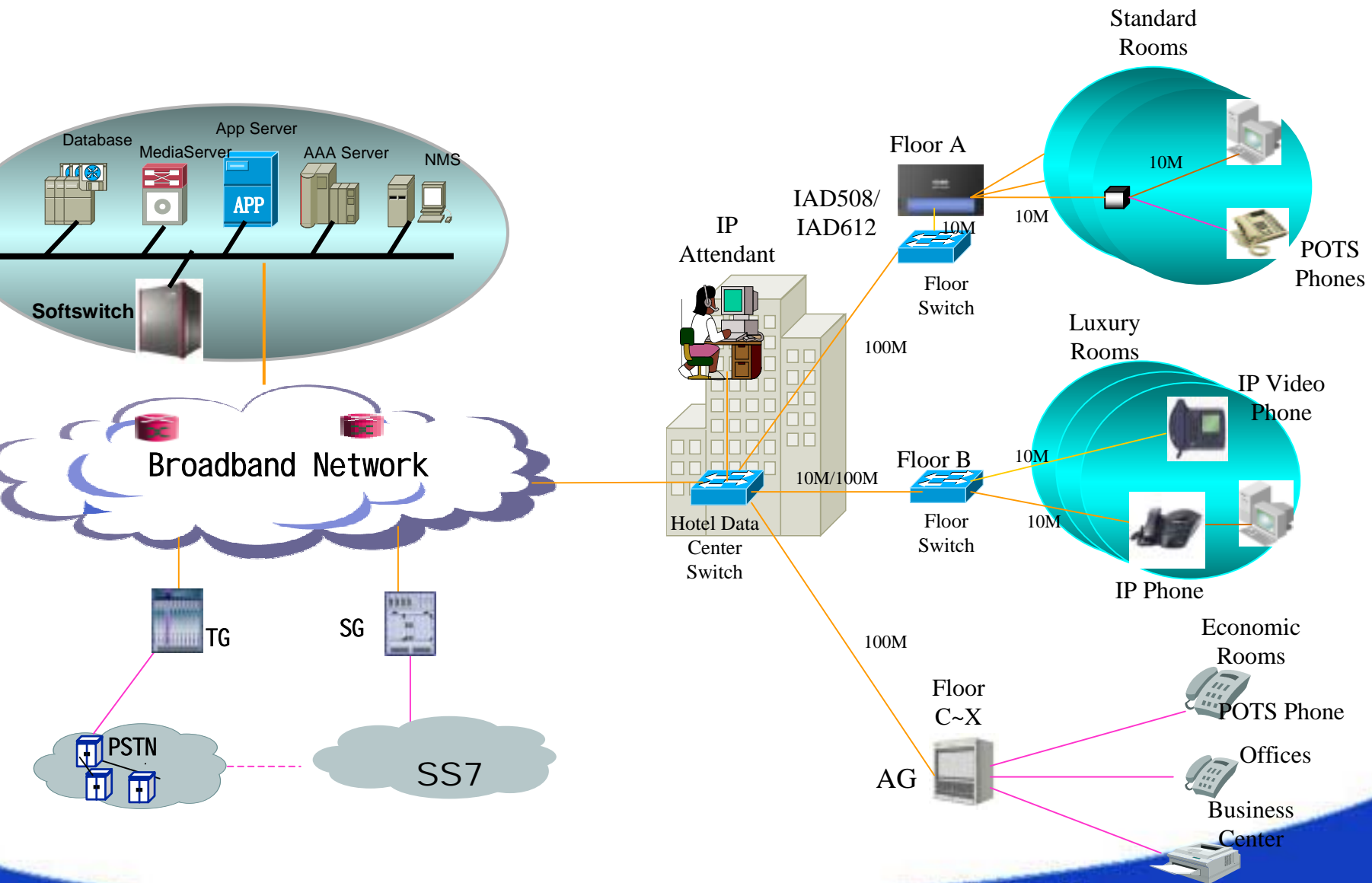
# Wireless Access Solution



# Hosted IP PBX/Centrex

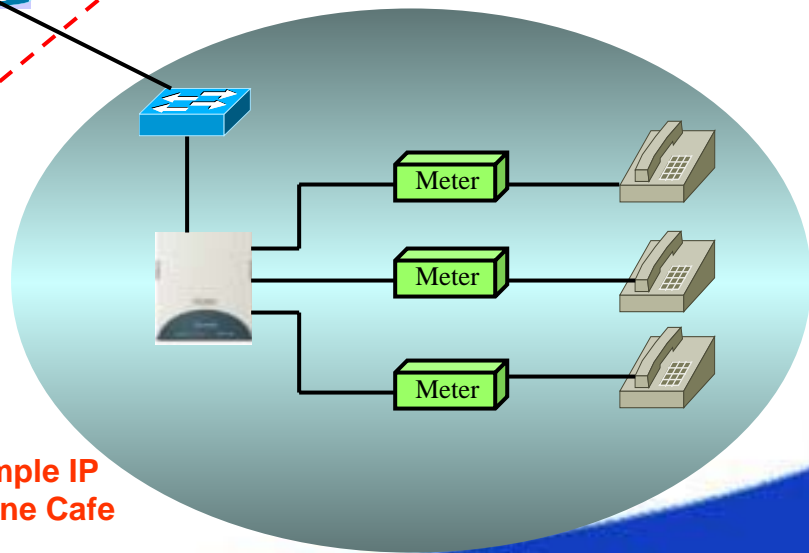
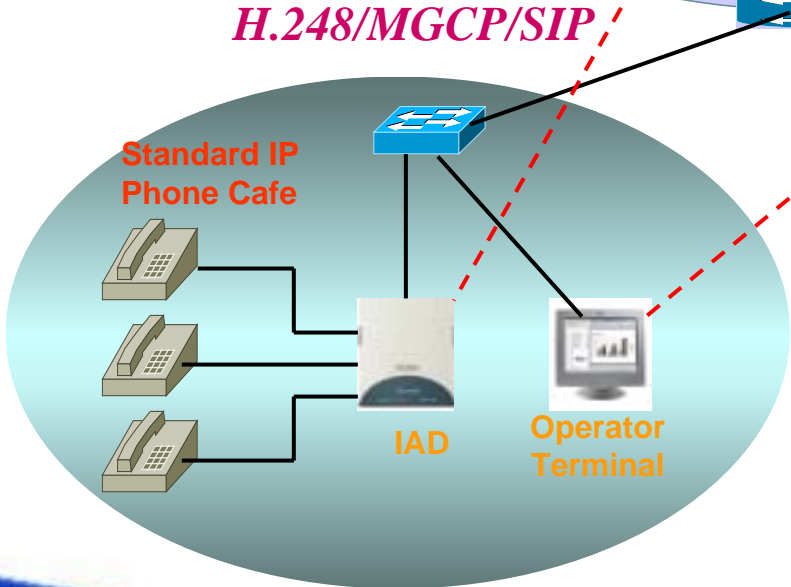
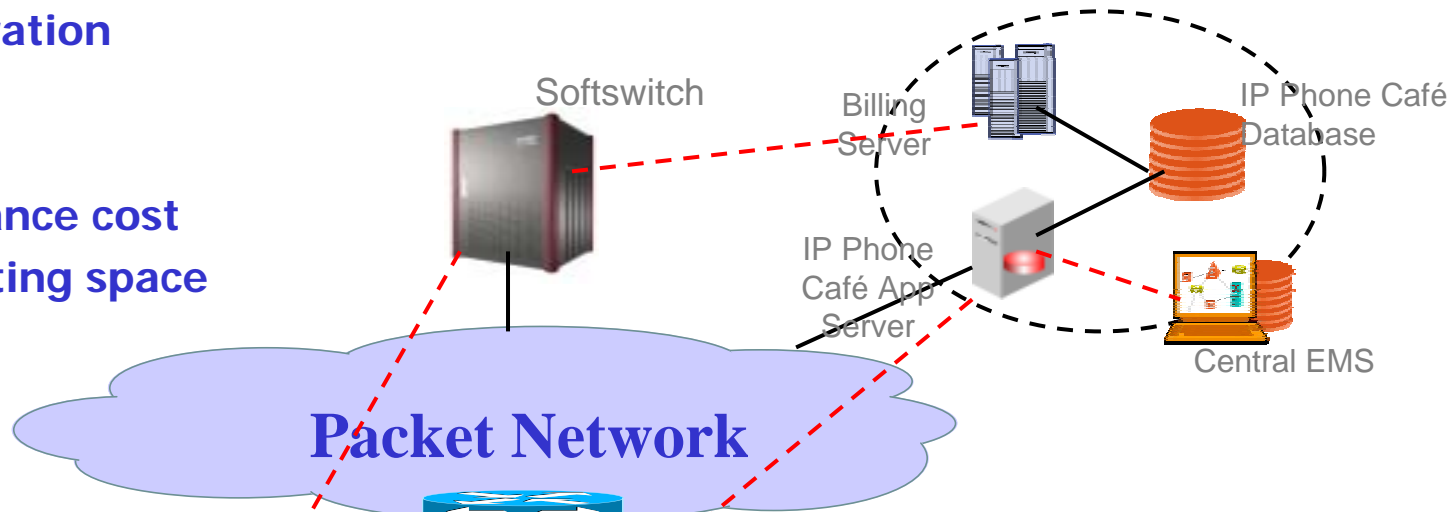


enterprise network convergence

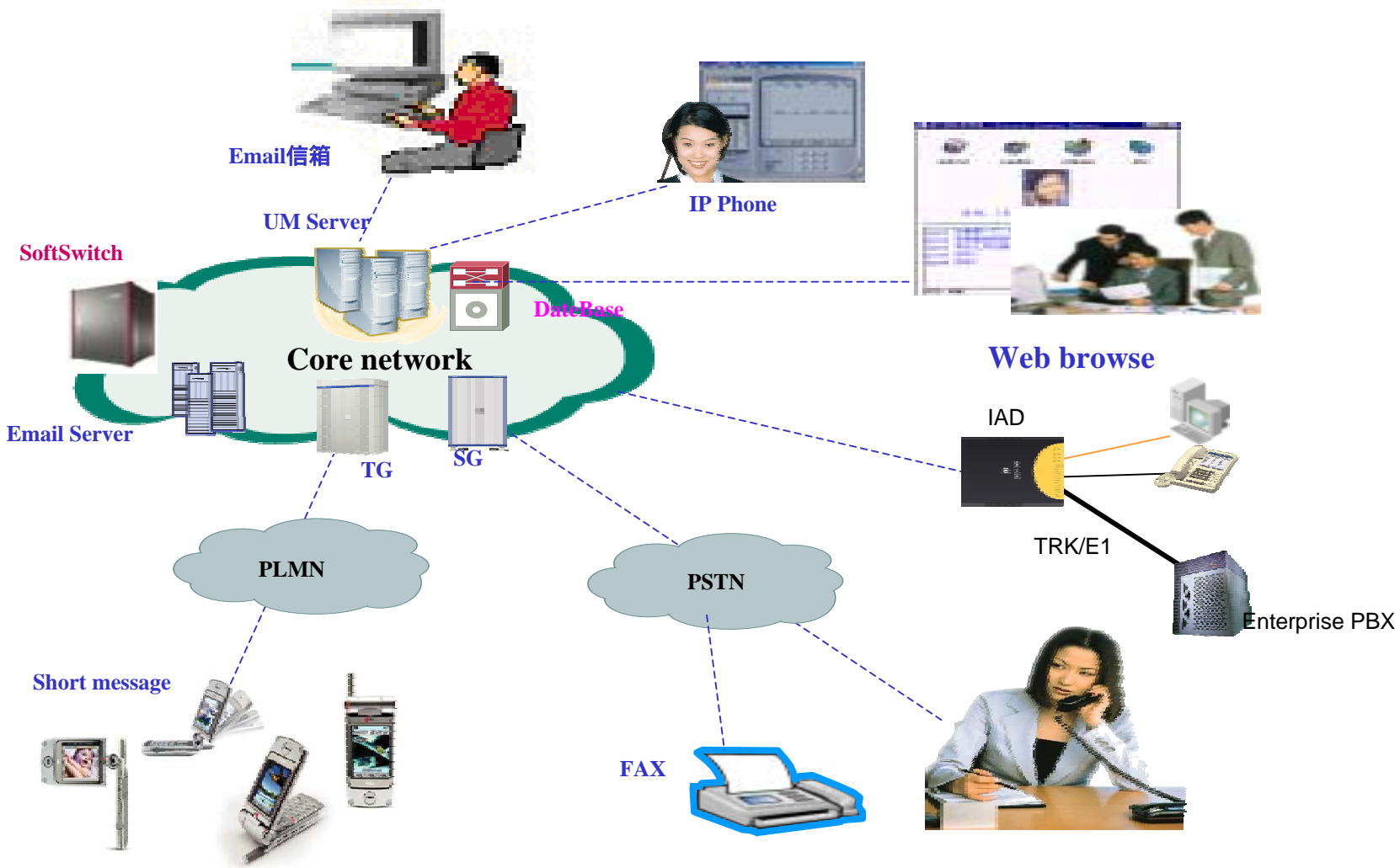


# Internet Phone Café - Netcom

- Easy build business model
- Easy configuration
- High ROI
- Fast setup
- low maintenance cost
- Utilizing existing space
- User friendly



# Unified Messaging Service



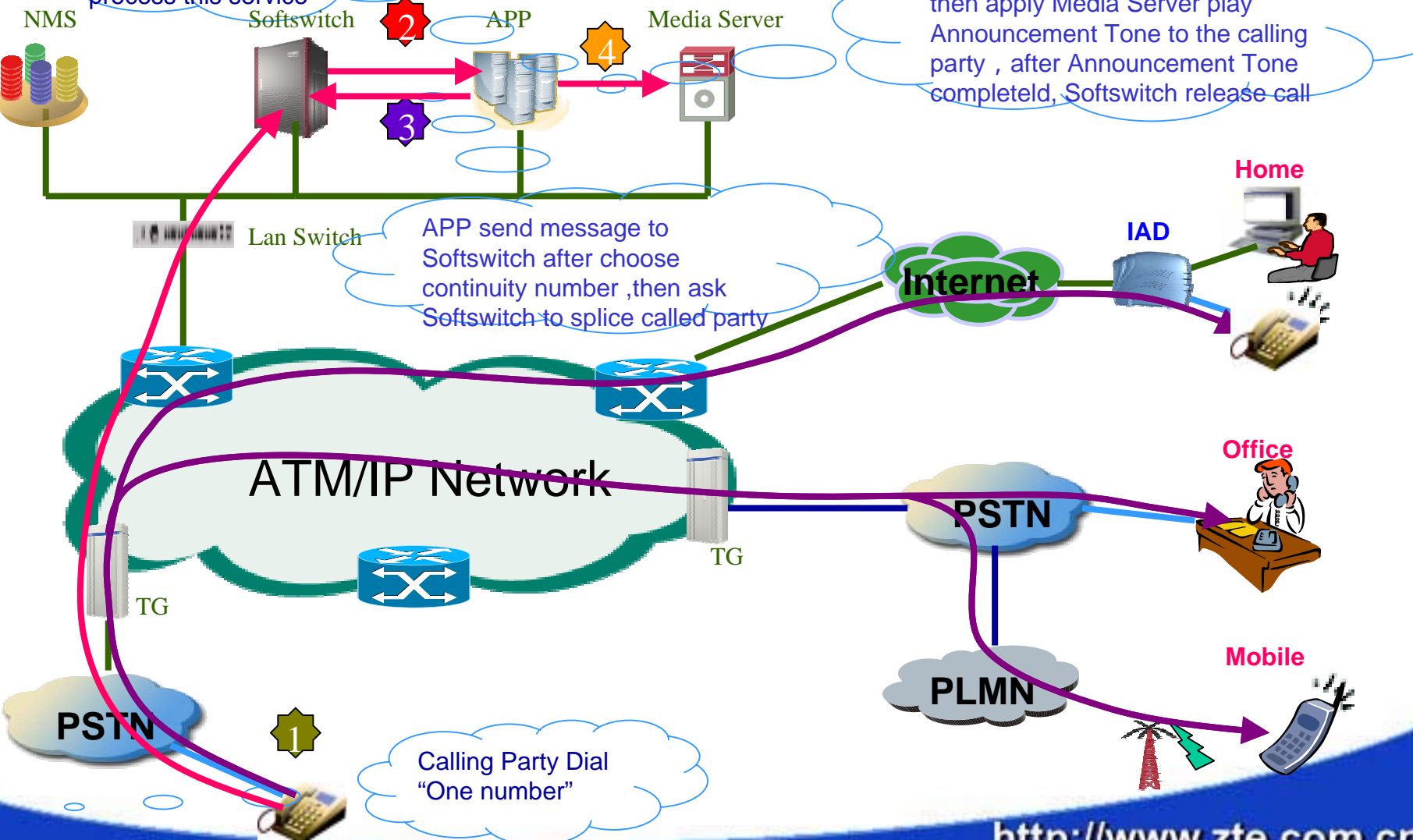


# One Number Link You

ONLY

The Softswitch triggers "One Number" service after analyse the Number.APP process this service

If APP can't splice called party, then apply Media Server play Announcement Tone to the calling party, after Announcement Tone completed, Softswitch release call



# Agenda

- NGN Overview
- Commercial Cases
- Total Solution
- **Product Family**

# ZTE Softswitch system elements

- Softswitch ZXSS10 SS1
- Signaling Gateway ZXSS10 S100
- Trunking Gateway ZXSS10 T200
- Integrated Access Device ZXSS10 I500 series, I600 series, I700 series
- Access Gateway ZXSS10 A200
- IP Phone ZXSS10 P800 series
- Application Server ZXSS10 APP
- Media Server ZXSS10 MeS
- Routing Server ZXSS10 RouS
- Network Management System ZXSS10 NMS
- Broadband Gateway ZXSS10 B100



**ZTE**

ZTE CORPORATION

**Global Connections Universal Solutions**

**Thank You**

<http://www.zte.com.cn>